



Cambridge Rape Crisis Centre

**Report of the Trustees Year Ended 31 March 2017
for Cambridge Rape Crisis Centre**



**Annual Report
April 2016 - March 2017**

Cambridge Rape Crisis Centre

**Contents of the Financial Statements
for the Year Ended 31 March 2017**

	Page
Report of the Trustees	1 to 15
Statement of Trustees Responsibilities	16
Independent Examiner's Report	17
Statement of Financial Activities	18
Balance Sheet	19
Notes to the Financial Statements	20 to 28
Detailed Statement of Financial Activities	29 to 30

Message from the Management Committee For the Year Ended 31st March 2017

The work of Cambridge Rape Crisis Centre has gone from strength to strength this year. We have seen many of our existing services grow and expand to meet the increase in demand for our services, we have been able to deliver new services and help to identify and highlight gaps in services for survivors in Cambridgeshire.

We have sustained our extended opening hours for our telephone helpline this year and continued to respond to calls on the helpline four times a week, increasing our capacity to respond to the need and demand for the service. Two new volunteer groups were recruited during the year and underwent the CRCC helpline and email support training and this in turn has enabled us to reduce the response time for our email support service. This year we have seen a significant increase in emails to our email support service, with an increase 44% on last year. The CRCC Counselling service has grown significantly this year and we have been able to offer 479 survivors access to specialist counselling; an increase of 24% since last year. The case work of the Independent Sexual Violence Advisors (ISVA) and Children and Young Peoples ISVA has increased by 357% since 2013-14 and each ISVA has an average case load of 30 clients. We successfully secured the countywide Sexual Violence Support Services contract in partnership with our sister centre in Peterborough and formed the Cambridge and Peterborough Rape Crisis Partnership. We delivered our third Peer Support Group project and ran a 6 week Healing and Empowerment group. We have continued to highlight the prevalence and impact of sexual violence through our community outreach and training.

Cambridge Rape Crisis Centre (CRCC) has continued to receive more referrals than ever before and the majority of women and girls we work with continue to seek our support for experiences that took place a number of years ago, including non-recent child sexual abuse, as well as for more recent experiences of sexual violence. It is with some sadness that we had to maintain waiting lists for our counselling service again this year.

In January 2016, the Crime Survey for England and Wales (CSEW), announced that sexual offences recorded by the police has continued to rise and the numbers of rapes and other sexual offences were at the highest level since these records began.

- Approximately 85,000 women are raped in England and Wales every year.
- Nearly half a million adults are sexually assaulted each year in England and Wales
- 1 in 5 women aged 16-59 experienced some form of sexual violence since the age of 16.
- Only around 15% of those who experience sexual violence choose to report to the police.

As a specialist, independent, grass-roots Rape Crisis Centre, CRCC continues to be committed to providing support services to survivors, working closely with a range of partner organisations to bring about the best possible outcomes for survivors and tackling and challenging the causes of sexual violence.

At a glance

1066 calls taken on the helpline

249 emails responded to

479 counselling clients

1306 counselling sessions delivered

390 survivors supported by the ISVA service

7 survivors accessing group work

12 new volunteers trained

10 trustees overseeing and steering the work of CRCC

With special thanks

We would like to take the opportunity to extend very special thanks to: Lee Eggleston (Rape Crisis England and Wales), Charlotte Snoxall (clinical supervisor), Angie Stewart (Cambridge Women's Aid) Simon Kerss and Vickie Crompton (Cambridgeshire County Council), Nicky Phillipson (Office of the PCC), Rachel Matheson (SARC), Katy Taylor (WRC), and our sister centre Peterborough Rape Crisis Care Group, for their continued support throughout this year. Thanks also to the generosity of our funders, as without their support CRCC could not sustain the provision of vital support services to women and girls in Cambridgeshire. Our funders are: Office of the Cambridgeshire Police and Crime Commissioner, Cambridge City Council, Cambridgeshire County Council, Ministry of Justice, Cambridge RAG, BBC Children in Need, East Cambridgeshire District Council, Cambridge RAG, Huntingdonshire Community Safety Partnership. We are particularly grateful to the many individuals, corporate donors and trusts, some anonymous, who give us their support every year.

All the members of the management committee, the trustees, staff, volunteers, sessional counsellors and the general members of CRCC have worked incredibly hard and put in a lot of hours to see our organisation continue and grow.

Our dedicated group of fundraising volunteers have organised fundraising events and activities, raising much needed funds for and awareness of CRCC. It is with immense gratitude we thank the Cambridge community of families and individuals, retailers and roller skaters, students and medical practitioners, pharmacists, poets and actors, schools, colleges and churches, singers, drummers and marathon runners, bakers, bikers and firewalkers, all of whom helped support CRCC through fundraising activities and events.

A big thank you to every single member of CRCC without whom, we would not still be here, providing support to women and girls who have experienced rape or sexual abuse. The work you all do is important and we hope this annual report illustrates that.

And finally, thank you to all the women and girls who use CRCC, for inspiring us with their strength and courage and for teaching us so much.

Report of the Trustees For the Year Ended 31st March 2017

The trustees present their report with the financial statements of the charity for the year ended 31 March 2017. The trustees have adopted the provisions of Accounting and Reporting by Charities: Statement of Recommended Practice applicable to charities preparing their accounts in accordance with the Financial Reporting Standard applicable in the UK and Republic of Ireland (FRS 102) (effective 1 January 2015). The trustees confirm that they have regard to the Charity Commission's guidance on public benefit. The Trustees believe the activities of the charity continue to comply with Section 4 of the Charities Act 2011 with regard to public benefit. The information about the public benefit provided by the charity is set out in this report.

Reference and Administrative Details

Charity name: Cambridge Rape Crisis Centre
Registered Charity number: 286098
Registered address: Box R, 12 Mill Road, Cambridge, CB1 2AD

Trustees: appointed 05.07.2017

M Lowthian - Chair
S Melville - Deputy Chair
J Grech - Secretary
S Helm - Treasurer
C Altun
ER Cornwall
M Correia
A Lindup
K Gainsborough - resigned 05.07.17
C Moore
M Messmer - appointed 05.07.2017

Independent Examiner

Lanham and Company
Chartered Accountants
9 Great Chesterford Court, London Road, Great Chesterford, Essex, CB10 1PF

Contact details and website

contact@cambridgerapecrisis.org.uk
www.cambridgerapecrisis.org.uk

Staff:

Norah Al-Ani – Director
Claire Gardner – Volunteer Co-ordinator
Cheryl Hollis – ISVA Navigator
Léa Maquin – Counselling Co-ordinator and CRCC Administrator

ISVA Team:

Ellie Ball
Amy O'Leary
Jenny Colley

Counselling Team:

Charlotte Snoxall – Clinical Supervisor and Counsellor
Margi Appleton - Counsellor
Terry Forbes-Mitchell - Counsellor
Maria Gilbert – Counsellor
Esra Gurkan – Counsellor (adult and children's service)
Carolyn Reisert – Counsellor (children's service)

Bank - Royal Bank of Scotland, Cambridge

Structure, Governance and Management

Governing Document

The charity is controlled by its governing document, a deed of trust, and constitutes an unincorporated charity. This charity has been registered with the charity commission since 5th May 1983 and established under a constitution containing specific objectives and powers which undergoes annual review at the AGM.

Organisational Structure

The current structure of the organisation is as follows;

The Management Committee of the CRCC (hereinafter referred to as the "Committee") shall consist of no fewer than 3 and no more than 12 Trustees together with at least two active call-takers with CRCC. The two active call-takers will be the call-taker representatives on the Committee and will be elected by the volunteer group and co-opted onto the Committee. Such representatives can choose to become Trustees of CRCC but are under no obligation to do so. At least one Trustee must not be working with CRCC service users in any way during their term as a Trustee.

Trustees shall be elected by majority vote at the AGM of the CRCC. Trustees are elected for a one year term, but may be re-elected annually.

The Committee shall include the following executive positions: Chair, Deputy Chair, Secretary, Treasurer, and Call-taker Representative. Other Trustees shall be elected to fill non-executive positions that are deemed necessary. No Trustee shall hold more than one executive position, but may hold more than one non-executive position, or one executive position and one or more non-executive positions.

The management committee and the trustees are responsible for the running of the charity and the fulfilment of its objectives as well as safeguarding its assets.

They are also obliged to ensure that the charity adheres to Charity Commission guidelines and regulations as well as any other laws that apply and ensure independently examined accounts and annual returns are submitted to the Charity Commission each year.

Annual General Meeting

The AGM is held to ensure that all members of CRCC are fully informed about the development of the charity, the management of funds and the service we provide. It is also to ensure that all members have a role in the future governance and development of the charity through revisions to the constitution and election of management committee members and trustees. Any active members wishing to be involved in management or trustee roles are invited to approach the management committee at any time.

Risk Management

The trustees have a duty to identify and review the risks to which the charity is exposed and to ensure appropriate controls are in place to provide reasonable assurance against fraud and error.

Reserves Policy

CRCC has a Reserves Policy. We require 6 months basic running costs in reserve to ensure that anyone depending on our service (especially long-term callers) are not left suddenly without support as this could have very serious repercussions for our very vulnerable service-users. Reserves for the year ending 31 March 2017 were £127,585 of which £57,461 were unrestricted and £70,124 were restricted. The trustees consider this to be a satisfactory amount.

Aims and Objectives

Our vision is that all women and girls should be free from the fear and experience of sexual violence

CRCC is a specialist sexual violence organisation which was set up to provide support services to women and girls who have experienced any form of sexual violence. CRCC acknowledges all forms of sexual violence, including: rape, sexual assault, childhood sexual abuse, sexual harassment, rape in marriage, forced marriage, and so-called honour based violence, female genital mutilation, trafficking and sexual exploitation, ritual abuse, irrespective of whether the violence is from known or unknown perpetrators.

Cambridge Rape Crisis Centre Objectives:

1. To relieve the distress of those women who have suffered sexual assault and support their families and friends.
2. To promote education and research in the subject of sexual violence and its effects on the survivor, whether physical, medical, psychological or social.
3. To train women as counsellors or chaperones so as to be able to cope with the problems of rape survivors by the provision of medical, legal and emotional counselling.
4. To publish informative and educative information about rape.
5. To set up a co-ordinated group of contacts to further the charitable aims and objects of the CRCC.
6. To obtain help and support where needed; through close contact with local government authorities, the health service, and voluntary organisations.
7. To raise money for the purposes of the CRCC on such terms and on such security as may be thought fit to accept donations and legacies.
8. To aid in the establishment and support of any association whose charitable purposes are in any way connected with the purposes of CRCC or calculated to further its objects.
9. To promote awareness and campaign against sexual violence against women.

Cambridge Rape Crisis Centre Aims:

- Provide specialist support to women and girls who have experienced or are experiencing rape, childhood sexual abuse or any form of sexual violence.
- Securing high quality specialist sexual violence services for women and girls who have experienced sexual violence.
- Raise awareness of sexual violence, its prevalence and effects.
- Build our collective expertise to improve services and policies for the benefit of survivors.
- Press for change and promote the importance and need for appropriate, high-quality and specialised support for survivors.
- End rape and sexual violence.

Achievements and Performance

Summary of Charitable Activities April 2016 – March 2017

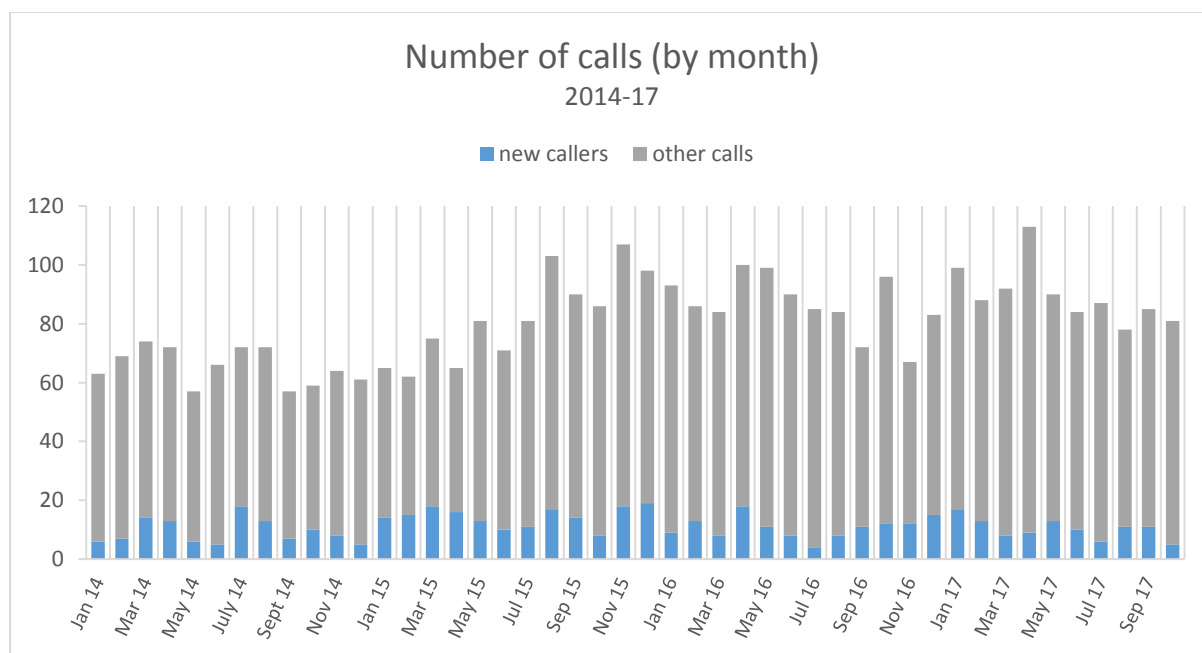
During 2016-17 CRCC continued to provide specialist wrap around support services to survivors of rape, sexual abuse and sexual violence in Cambridgeshire. Through the availability of a confidential telephone helpline, trauma informed counselling service for adults and children, ISVA and ChISVA service, email support and group work.

Telephone Helpline

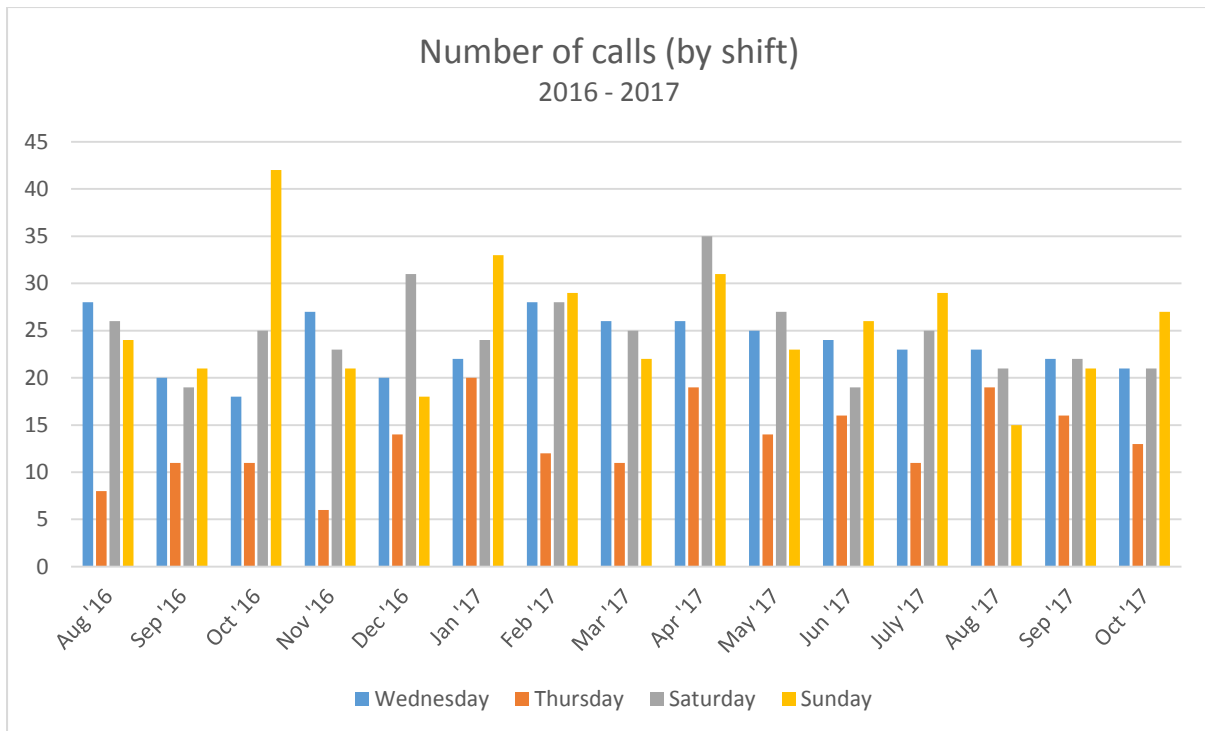
In the year 2016 – 2017 CRCC responded to 1066 calls to our telephone helpline. In the reporting year we continued to offer 11 hours of helpline support each week. The Helpline is open four times a week, on the following days:

Wednesday 7pm– 9.30pm
Thursday 7pm – 9.30pm
Saturday 3pm – 5.30pm and
Sunday 10am – 12.30pm

There are over 25 volunteers providing the helpline and email service. These services could not run without the commitment and dedication of our volunteers. All CRCC volunteers receive an initial 52 hours specialist sexual violence training to undertake the role of helpline volunteer and there is a programme of continuous professional development. The training covers a wide range of topics and includes: understanding rape, gendered violence, child sexual abuse, ritual abuse, Dissociative Identity Disorders, suicide, self-harm and disordered eating, working with young survivors, prostitution, sexual exploitation, supporting BAMER survivors, supporting Lesbian and Bi survivors and the criminal justice system.



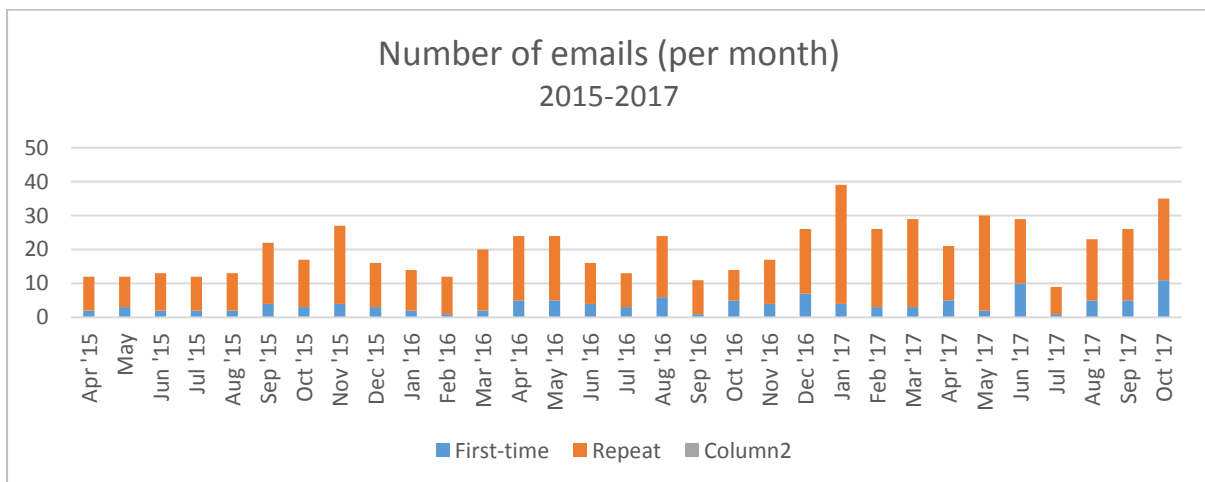
**Report of the Trustees Year Ended 31 March 2017 for Cambridge Rape Crisis Centre
Charity No: 286098**



Email Support

The Email Support Service provides an alternative route to accessing emotional support and information for survivors for whom using the written rather than spoken word may feel easier, safer or more comfortable.

We have responded to 249 emails in the reporting period. By increasing the number of email support shifts we have been able to reduce our response time this year.



Counselling Service

In 2016-17 we provided 479 survivors with access to specialist sexual violence counselling in Cambridge, Ely and Huntingdon. We have continued to work in partnership with our sister centre, Peterborough Rape Crisis Care Group, to ensure our counselling services are accessible to survivors across the county. Each woman is offered up to 20 counselling sessions with one of our four specialist sexual violence counsellors in a range of appropriate community settings and spaces.

Survivors were seeking our counselling service support for different types of assaults including: 66% of survivors had experienced multiple assaults; 88% of clients had been raped; 28% were survivors of child sexual abuse; 19% had experienced domestic violence; 16% had experienced sexual assault; and 6% were survivors of child sexual exploitation.

In the reporting period we were able to deliver our BBC Children in Need funded Children and Young People's counselling service to those aged 5 – 18yrs in Cambridgeshire. The service is child and young person focussed and entirely delivered in the community to ensure that children and young people can access the service with ease and at venues close to them and that feel safe and comfortable.

Feedback from counselling service:

- *It was very supportive and helpful*
- *It was very empathetic, helpful and gave me an understanding*
- *I felt like I was believed and understood from the very start and was treated as a credible and reliable person rather than an unstable one (which was how I often used to feel)*
- *Being made to feel like a hero not a victim. Getting credit for my achievement in surviving.*
- *Relaxation time. Caring and friendliness of folk here.*
- *The number of sessions with the counsellor is very generous and continues even when you are doing well.*
- *Being treated as an individual - humanistic approach rather than medical*
- *I have deeply valued the support I have received from CRCC and it has changed my life.*
- *Helped me build/rebuild relationships and share a new understanding with my family.*

**Report of the Trustees Year Ended 31 March 2017 for Cambridge Rape Crisis Centre
Charity No: 286098**

Each survivor is asked to complete a before and after questionnaire to capture 'distanced travelled' during their counselling sessions.

Counselling journey – Before & after



Independent Sexual Violence Advocates (ISVAs)

The Cambridgeshire ISVA Service provides information, advocacy and support to both historical, recent and acute survivors of sexual violence, and work closely with other relevant services and agencies in Cambridgeshire in order to address the impacts of sexual violence both on the individual survivor, their family and the local community. In the reporting year the Cambridgeshire ISVAs each had an average case load of 30 clients at any one time.

This year the ISVAs have provided assistance in relation to:

- Providing independent and reliable advice to survivors of sexual violence in relation to police processes and the criminal justice system
- Assisting survivors who decided to report by facilitating the reporting of the offence
- Supporting survivors throughout their contact with the criminal justice system, including support at Visually Recorded Interviews (VRI) and whilst giving evidence at Court
- Providing support in relation to the survivor's sexual health, by enabling access to follow up advice and screenings
- Managing risk - taking behaviour and safety planning, carrying out risk assessments and referring to MARAC where relevant
- Supporting clients pre-trial to enable them to give evidence safely with appropriate special measures
- Organising pre-trial court visits for clients
- Supporting survivors to deal with a range of Criminal Justice System (CJS) outcomes (cases No Further Actioned (NFA), not-guilty verdicts, hung jury etc.)
- Supporting clients in liaising with employers, schools and other academic institutions to explain mitigating circumstances
- Providing support and advocacy enabling survivors to access appropriate services regarding substance misuse, mental health, housing and other services
- Assessing the client's readiness for counselling and making referrals to counselling services
- Completing applications to the Criminal Injuries Compensation Authority (CICA)
- Assisting with access to housing, social security and support around financial problems impacting on survivor's recovery and wellbeing.
- Supporting clients who are in-patients at secure mental health units and provide advocacy where necessary within the unit to ensure their staff are fully aware of the situation and are able to put appropriate support in place.

Children and Young People's Independent Sexual Violence Advocate

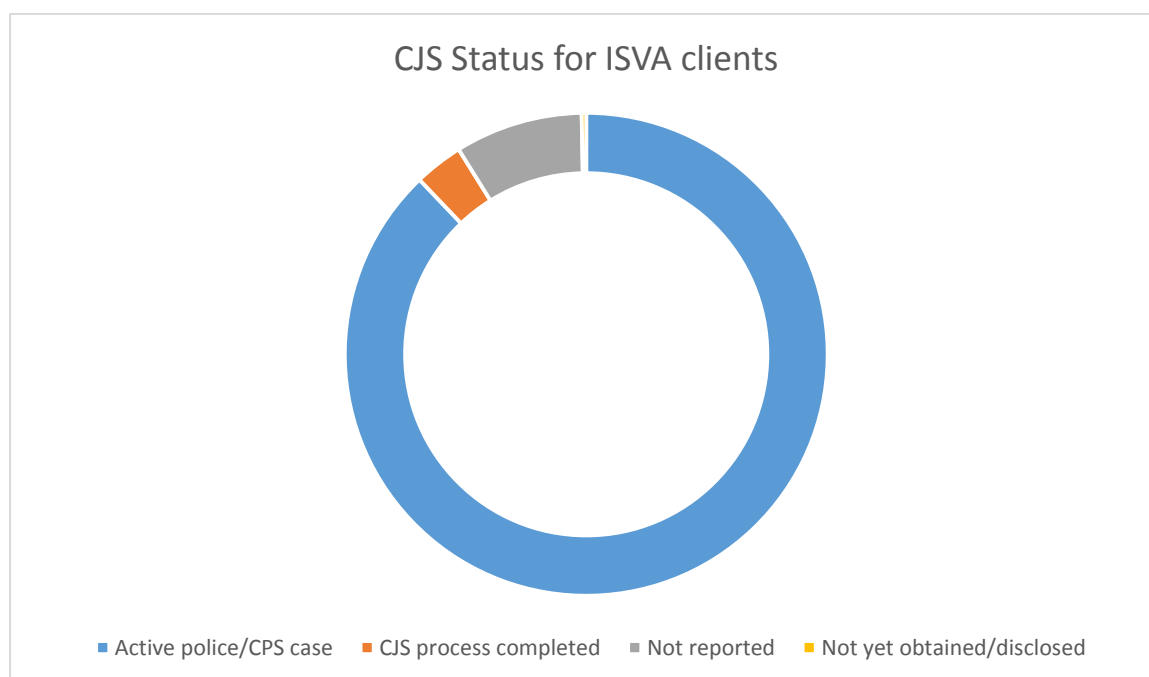
The ChISVA supports children and young people, aged 0 – 18yrs, who are experiencing or at risk of experiencing child sexual abuse or exploitation. The ChISVA supports children and young people to access a range of appropriate services, explores ways to help manage their mental health and help them to stay engaged within the criminal justice system. Her presence pre, during and post court has helped children and young people to make sense of the processes within and around it and to feel supported, ready and able to stand up in court to give their best evidence.

The ChISVA also provides advocacy for young people in their educational establishments and attends school meetings and also supplies formal letters to confirm any mitigating circumstances. This helps to negotiate and support young people to stay in education and helps teachers and other professionals to gain a good understanding of the client's circumstances and issues.

ISVA service client profile April 2016-March 2017:

Gender	No. of Clients
Female	377
Male	13

Criminal Justice Status of ISVA clients:



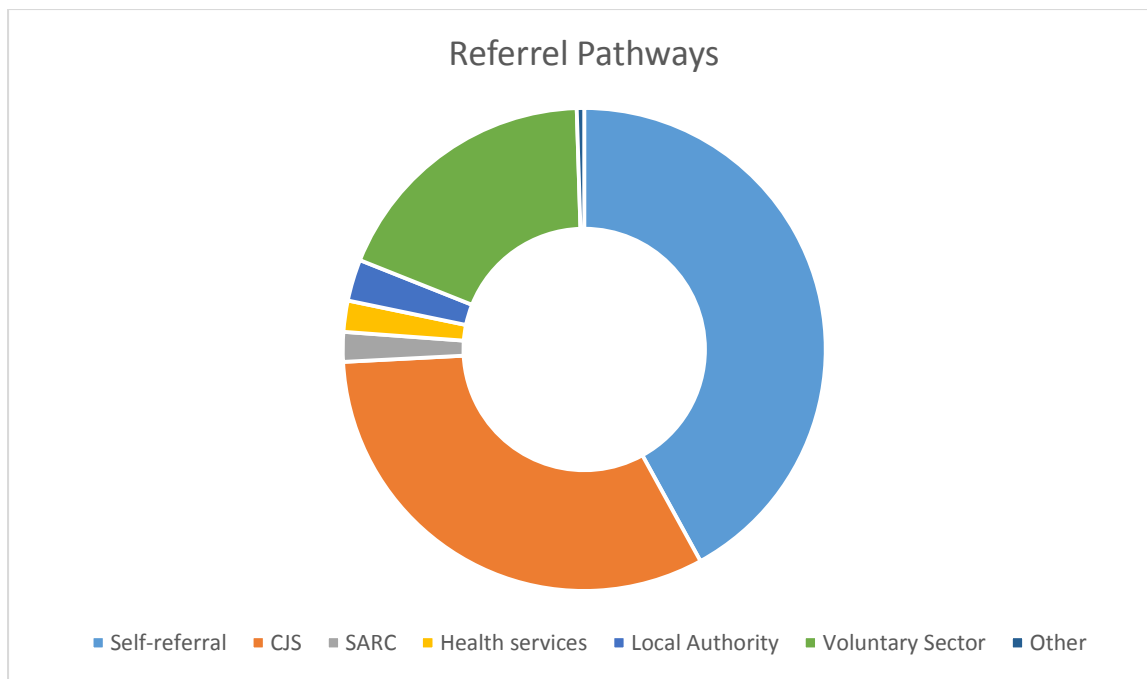
**Report of the Trustees Year Ended 31 March 2017 for Cambridge Rape Crisis Centre
Charity No: 286098**

CRCC service user profile*:

Type of assault – adult 18 year and over	
Adult - Ongoing/recent rape or sexual violence (18yrs+)	371
Adult - Historic rape/sexual violence (18yrs+)	186
Adult - Historic child sexual abuse (18yrs+)	177
Not known/chose not to say	149
Type of assault – Young person (13-17 yrs)	
Young person – Recent rape/sexual violence (13-17yrs)	44
Young person – Historic rape/sexual abuse (13-17yrs)	17
Young person – Not stated (13-17yrs)	12
Type of assault – children (under 13yrs)	
Children – sexual abuse (under 13yrs)	31
Children – not stated (under 13yrs)	7
Support provided to support of survivor (parent, carer, sibling etc)	
Support for supports	13
Multiple assaults	
Adult – multiple assaults (18yrs+)	141
Young person – multiple assaults (13-17yrs)	15
Children – multiple assaults (under 13yrs)	5

*where data is provided

Referral pathways into CRCC services



Snapshot of CRCC service outcomes and impact

Mental and physical health:

All service users said they felt much better able to make every day decisions as a result of the support, information and advice they had received. 100% of service users felt good about themselves and had a better sense of self and they felt more confident. Service users now felt more able to make decisions and choices about what to do about the sexual violence they had experienced.

Shelter and accommodation:

94% of service users felt they had been able to make decisions about their future, for a large number this included resolving insecure housing issues and securing longer term stable housing.

Family, friends and children:

100% of service users said that they now had people around them that they could trust and had started to feel close to the people who mattered to them (children, partners, family and friends).

Education, skills and employment:

81% of service users said they felt better able to make decisions and choices about choosing to re-engage with education and maintain or re-enter paid employment.

Drugs and alcohol abuse:

93% of service users said they were taking better care of themselves and this included finding more positive coping strategies and moving away from harmful coping strategies such as substance misuse and dependency.

Finance and benefits:

77% of service users felt they understood their rights and what they were entitled to. In particular how to access benefits they were entitled to.

Outlook and attitude:

84% of service users felt they understood more about how the sexual violence they had experienced had affected them and felt they had a better understanding of their situation and what to do about it. For example, this included 20% of service users choosing to engage with the CJS and 10% of service users choosing to engage in civil proceedings.

Social interactions:

97% of service users now felt better informed about what additional support resources were available to them and how to access them. For most this was about reconnecting with social networks and starting to feel more engaged with, and a part of, the community they lived in.

Group Work – The Healing and Empowerment Group

A group of women attended the Healing and Empowerment Support group. The aim of the group was to provide a facilitated peer support group to enable survivors to re-build their confidence, sense of self and to recognise their own strength and resilience.

More specifically the aims of the group were:

- to act as a safe container where survivors can feel some sense of normalisation and to provide a safe space to begin to work on management and self-worth to then be in a 'better place' to process their abuse and work towards a more positive future.
- to work together to build confidence and self-esteem and to begin the process of recovery and healing in a safe space with other survivors.
- to combat the isolation and silencing often experienced by survivors of sexual abuse and rape and to support the group to build resilience and a sense of empowerment to regain control over their lives and decision making for the future.



Trauma of sexual abuse can harm an inner sense of connection with oneself and others. Peer support group work can re-establish that connection and is a powerful way to reconnect survivors to themselves, each other and society which provides a sense of personal and collective empowerment.

Feedback from group work participants:

- I will take away a sense of my own self-worth from the workshops
- The aspect I liked most about the workshops was feeling empowered
- All women who have or have not gone through what we have (as survivors) should be able to have a voice and you have been able to help me get a voice and know my self-worth.
- These workshops have really helped me see my own self-worth and learn that not everything is terrible.
- I liked that there was other peoples in the workshop who I could relate to because of similar experiences.
- Thank you very much. I wish this could run as a permanent group.
- For me what I will take away from the workshops is sisterhood and not being alone.
- The aspects of the workshop I liked the most was the interaction and sharing with each other.
- Wish it had gone on longer

Training and outreach

CRCC has delivered training to 450+ people in the year including public sector staff, health care professionals, Cambridge university colleges (students and staff), and a wide range of community groups and organisations. CRCC has also attended a number of community based events and activities such as fresher's week, Well Being Week, LGBT History Month event, Independent Living event.

Participation and committed involvement in the following strategic partnership and networks

- Cambridgeshire Domestic Abuse and Sexual Violence Partnership Governance Board
- Cambridgeshire Domestic Abuse and Sexual Violence Partnership
- The Cambridge City Domestic Abuse and Sexual Violence Forum
- The Crown Prosecution Service Violence Against Women and Girls Scrutiny Panel for the East of England
- Sexual Assault Referral Centre (SARC) Strategic Board
- SARC Management Group
- The Cambridge Equalities Partnership
- Rape Crisis East Regional Network
- Rape Crisis England and Wales

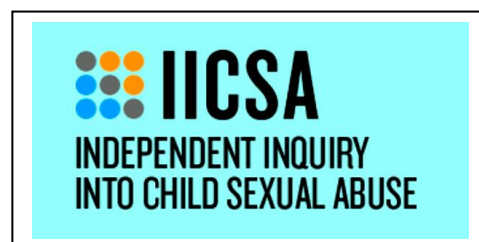
Partnership working:

In November 2016 the Cambridge and Peterborough Rape Crisis Partnership successfully secured the County Wide Contract for Sexual Violence Support services. The contract covers the delivery of a county wide ISVA service and also makes a contribution towards other support services for survivors of sexual violence (including helpline provision, counselling and group work)



IICSA – Independent Inquiry into Child Sexual Abuse

CRCC are a partner Rape Crisis Centre in the national tender to provide support to survivors giving evidence as part of the Truth Project for the Independent Inquiry into Child Sexual Abuse. The Inquiry has been set up to look at ways organisations and institutions in England and Wales have failed to protect children from sexual abuse. We have provided support to a number of survivors already who have come forward to give evidence to the Inquiry.



Financial review

The majority of the charity's income comes from grants.

The accounts show a good year for the charity, with overall income of £256,474 an increase of £81,638 on the previous year. This allowed the charity to increase expenditure on the services provided by the charity, with overall expenditure of £241,843 during the year an increase of £71,489 on the previous year.

Cambridge Rape Crisis Centre

**Statement of Trustees Responsibilities
for the Year Ended 31 March 2017**

The trustees are responsible for preparing the Report of the Trustees and the financial statements in accordance with applicable law and United Kingdom Accounting Standards (United Kingdom Generally Accepted Accounting Practice).

The law applicable to charities in England and Wales, the Charities Act 2011, Charity (Accounts and Reports) Regulations 2008 and the provisions of the trust deed requires the trustees to prepare financial statements for each financial year which give a true and fair view of the state of affairs of the charity and of the incoming resources and application of resources, including the income and expenditure, of the charity for that period. In preparing those financial statements, the trustees are required to

- select suitable accounting policies and then apply them consistently;
- observe the methods and principles in the Charity SORP;
- make judgements and estimates that are reasonable and prudent;
- prepare the financial statements on the going concern basis unless it is inappropriate to presume that the charity will continue in business.

The trustees are responsible for keeping proper accounting records which disclose with reasonable accuracy at any time the financial position of the charity and to enable them to ensure that the financial statements comply with the Charities Act 2011, the Charity (Accounts and Reports) Regulations 2008 and the provisions of the trust deed. They are also responsible for safeguarding the assets of the charity and hence for taking reasonable steps for the prevention and detection of fraud and other irregularities.

Approved by order of the board of trustees on and signed on its behalf by:

.....
M Lowthian - Trustee

**Independent Examiner's Report to the Trustees of
Cambridge Rape Crisis Centre**

Independent examiner's report to the trustees of Cambridge Rape Crisis Centre

I report to the charity trustees on my examination of the accounts of the Cambridge Rape Crisis Centre (the Trust) for the year ended 31 March 2017.

Responsibilities and basis of report

As the charity trustees of the Trust you are responsible for the preparation of the accounts in accordance with the requirements of the Charities Act 2011 ('the Act').

I report in respect of my examination of the Trust's accounts carried out under section 145 of the Act and in carrying out my examination I have followed all applicable Directions given by the Charity Commission under section 145(5)(b) of the Act.

Independent examiner's statement

Since your charity's gross income exceeded £250,000 your examiner must be a member of a listed body. I can confirm that I am qualified to undertake the examination because I am a registered member of which is one of the listed bodies

I have completed my examination. I confirm that no material matters have come to my attention in connection with the examination giving me cause to believe that in any material respect:

1. accounting records were not kept in respect of the Trust as required by section 130 of the Act; or
2. the accounts do not accord with those records; or
3. the accounts do not comply with the applicable requirements concerning the form and content of accounts set out in the Charities (Accounts and Reports) Regulations 2008 other than any requirement that the accounts give a true and fair view which is not a matter considered as part of an independent examination.

I confirm that there are no other matters to which your attention should be drawn to enable a proper understanding of the accounts to be reached.

Andrew Ireland FCCA
Lanham and Company Limited
Chartered Accountants
9 Great Chesterford Court
London Road
Great Chesterford
Essex
CB10 1PF

Date:

Cambridge Rape Crisis Centre

**Statement of Financial Activities
for the Year Ended 31 March 2017**

		Unrestricted funds	Restricted funds	31.3.17 Total funds	31.3.16 Total funds
	Not es	£	£	£	£
INCOME AND ENDOWMENTS FROM					
Donations and legacies	2	6,802	-	6,802	12,240
Charitable activities	5				
Support and advice		-	231,113	231,113	157,083
Other trading activities	3	18,480	-	18,480	5,449
Investment income	4	<u>79</u>	<u>-</u>	<u>79</u>	<u>64</u>
Total		25,361	231,113	256,474	174,836
 EXPENDITURE ON					
Raising funds	6	5,312	1,747	7,059	974
Charitable activities	7				
Support and advice		<u>29,631</u>	<u>205,153</u>	<u>234,784</u>	<u>169,380</u>
Total		34,943	206,900	241,843	170,354
 NET INCOME/(EXPENDITURE)					
		(9,582)	24,213	14,631	4,482
Transfers between funds	15	<u>(1,073)</u>	<u>1,073</u>	<u>-</u>	<u>-</u>
Net movement in funds		(10,655)	25,286	14,631	4,482
 RECONCILIATION OF FUNDS					
Total funds brought forward		68,120	44,834	112,954	108,472
TOTAL FUNDS CARRIED FORWARD		<u><u>57,465</u></u>	<u><u>70,120</u></u>	<u><u>127,585</u></u>	<u><u>112,954</u></u>

CONTINUING OPERATIONS

All income and expenditure has arisen from continuing activities.

Cambridge Rape Crisis Centre

**Balance Sheet
At 31 March 2017**

		Unrestricted funds	Restricted funds	31.3.17 Total funds	31.3.16 Total funds
	Not es	£	£	£	£
CURRENT ASSETS					
Debtors	13	4,916	50,258	55,174	2,858
Cash at bank		<u>64,137</u>	<u>19,866</u>	<u>84,003</u>	<u>116,360</u>
		69,053	70,124	139,177	119,218
CREDITORS					
Amounts falling due within one year	14	(11,592)	-	(11,592)	(6,264)
		<u>57,461</u>	<u>70,124</u>	<u>127,585</u>	<u>112,954</u>
NET CURRENT ASSETS					
		<u>57,461</u>	<u>70,124</u>	<u>127,585</u>	<u>112,954</u>
TOTAL ASSETS LESS CURRENT LIABILITIES					
		<u>57,461</u>	<u>70,124</u>	<u>127,585</u>	<u>112,954</u>
NET ASSETS					
		<u><u>57,461</u></u>	<u><u>70,124</u></u>	<u><u>127,585</u></u>	<u><u>112,954</u></u>
FUNDS					
Unrestricted funds	15			57,461	68,120
Restricted funds				<u>70,124</u>	<u>44,834</u>
TOTAL FUNDS					
				<u><u>127,585</u></u>	<u><u>112,954</u></u>

The financial statements were approved by the Board of Trustees on and were signed on its behalf by:

.....
M Lowthian -Trustee

Cambridge Rape Crisis Centre

Notes to the Financial Statements for the Year Ended 31 March 2017

1. ACCOUNTING POLICIES

Basis of preparing the financial statements

The financial statements of the charity, which is a public benefit entity under FRS 102, have been prepared in accordance with the Charities SORP (FRS 102) 'Accounting and Reporting by Charities: Statement of Recommended Practice applicable to charities preparing their accounts in accordance with the Financial Reporting Standard applicable in the UK and Republic of Ireland (FRS 102) (effective 1 January 2015)', Financial Reporting Standard 102 'The Financial Reporting Standard applicable in the UK and Republic of Ireland' and the Charities Act 2011. The financial statements have been prepared under the historical cost convention.

Income

All income is recognised in the Statement of Financial Activities once the charity has entitlement to the funds, it is probable that the income will be received and the amount can be measured reliably. Revenue is measured at the fair value of the consideration received or receivable.

Expenditure

Liabilities are recognised as expenditure as soon as there is a legal or constructive obligation committing the charity to that expenditure, it is probable that a transfer of economic benefits will be required in settlement and the amount of the obligation can be measured reliably. Expenditure is accounted for on an accruals basis and has been classified under headings that aggregate all cost related to the category. Where costs cannot be directly attributed to particular headings they have been allocated to activities on a basis consistent with the use of resources.

Taxation

The charity is exempt from tax on its charitable activities.

Fund accounting

Unrestricted funds can be used in accordance with the charitable objectives at the discretion of the trustees.

Restricted funds can only be used for particular restricted purposes within the objects of the charity. Restrictions arise when specified by the donor or when funds are raised for particular restricted purposes.

Further explanation of the nature and purpose of each fund is included in the notes to the financial statements.

Pension costs and other post-retirement benefits

The charity operates a defined contribution pension scheme. Contributions payable to the charity's pension scheme are charged to the Statement of Financial Activities in the period to which they relate.

Cambridge Rape Crisis Centre

Notes to the Financial Statements for the Year Ended 31 March 2017

1. ACCOUNTING POLICIES - continued

Debtors and creditors receivable / payable within one year

Debtors and creditors with no stated interest rate and receivable or payable within one year are recorded at transaction price. Any losses arising from impairment are recognised in the profit and loss account in other administrative expenses.

Cash and cash equivalents

Cash is represented by cash in hand and deposits with financial institutions repayable without penalty on notice of not more than 24 hours. Cash equivalents are highly liquid investments that mature in no more than three months from the date of acquisition and that are readily convertible to known amounts of cash with insignificant risk of change in value.

Loans and borrowings

Loans and borrowings are initially recognised at the transaction price including transaction costs. Subsequently, they are measured at amortised cost using the effective interest rate method, less impairment. If an arrangement constitutes a finance transaction it is measure at present value.

Tangible fixed assets

Tangible fixed assets costing more than £500 are capitalised and included at cost including any incidental expenses of acquisition.

2. DONATIONS AND LEGACIES

	31.3.17	31.3.16
	£	£
Donations	<u>6,802</u>	<u>12,240</u>

3. OTHER TRADING ACTIVITIES

	31.3.17	31.3.16
	£	£
Fundraising events	18,330	5,189
Training income	<u>150</u>	<u>260</u>
	<u>18,480</u>	<u>5,449</u>

4. INVESTMENT INCOME

	31.3.17	31.3.16
	£	£
Deposit account interest	<u>79</u>	<u>64</u>

5. INCOME FROM CHARITABLE ACTIVITIES

	31.3.17	31.3.16
	£	£
Grants	<u>231,113</u>	<u>157,083</u>
Activity		
Support and advice		

Cambridge Rape Crisis Centre

**Notes to the Financial Statements
for the Year Ended 31 March 2017**

INCOME FROM CHARITABLE ACTIVITIES - continued

5.

Grants received, included in the above, are as follows:

	31.3.17	31.3.16
	£	£
Cambridge City Council	12,730	1,000
Cambridgeshire County Council	12,220	17,163
Corporate Sponsor	-	6,000
Cambridge RAG	4,250	3,750
Ministry of Justice	42,000	30,000
Police & Crime Commissioner	146,884	9,500
Trust Funding	-	9,000
BBC Children in need	9,719	11,770
Office of the Police and Crime Commissioner for Norfolk	-	68,900
Rape Crisis England and Wales	<u>3,310</u>	<u>-</u>
	<u>231,113</u>	<u>157,083</u>

6. **RAISING FUNDS**

Raising donations and legacies

	31.3.17	31.3.16
	£	£
Events	<u>7,059</u>	<u>974</u>

7. **CHARITABLE ACTIVITIES COSTS**

	Direct costs (See note 8)	Support costs (See note 9)	Totals
	£	£	£
Support and advice	<u>233,718</u>	<u>1,066</u>	<u>234,784</u>

8. **DIRECT COSTS OF CHARITABLE ACTIVITIES**

	31.3.17	31.3.16
	£	£
Staff costs	102,649	79,248
Rent, rates and room hire	16,188	8,485
Insurance	514	480
Telephone and internet	5,711	2,927
Postage, stationery & office supplies	8,327	2,142
Sundries	1,100	174
Clinical Supervision	3,700	2,798
Volunteer training	1,315	2,415
Travel	2,120	220
DBS checks	-	30
Counselling	86,319	64,892
Payroll services	334	608
ISVA Expenses	5,133	4,063
Books and publications	<u>308</u>	<u>-</u>
	<u>233,718</u>	<u>168,482</u>

Cambridge Rape Crisis Centre

**Notes to the Financial Statements
for the Year Ended 31 March 2017**

9. SUPPORT COSTS

	Governance costs £ <u>1,066</u>
Support and advice	

Support costs, included in the above, are as follows:

	31.3.17 Support and advice £ <u>1,066</u>	31.3.16 Total activities £ <u>898</u>
Accountancy and legal fees		

10. TRUSTEES' REMUNERATION AND BENEFITS

There were no trustees' remuneration or other benefits for the year ended 31 March 2017 nor for the year ended 31 March 2016.

Trustees' expenses

There were no trustees' expenses paid for the year ended 31 March 2017 nor for the year ended 31 March 2016.

11. STAFF COSTS

	31.3.17 £ 92,314 6,189 4,146 <u>102,649</u>	31.3.16 £ 74,216 5,032 - <u>79,248</u>
Wages and salaries		
Social security costs		
Other pension costs		

The average monthly number of employees during the year was as follows:

	31.3.17 <u>3</u>	31.3.16 <u>3</u>
Support and advice		

No employees received emoluments in excess of £60,000.

12. COMPARATIVES FOR THE STATEMENT OF FINANCIAL ACTIVITIES

	Unrestricted funds £	Restricted funds £	Total funds £
INCOME AND ENDOWMENTS FROM			
Donations and legacies	12,240	-	12,240
Charitable activities			
Support and advice	2,163	154,920	157,083
Other trading activities	5,449	-	5,449
Investment income	<u>64</u>	<u>-</u>	<u>64</u>
Total	19,916	154,920	174,836

Cambridge Rape Crisis Centre

Notes to the Financial Statements
for the Year Ended 31 March 2017

12. COMPARATIVES FOR THE STATEMENT OF FINANCIAL ACTIVITIES - continued

	Unrestricted funds £	Restricted funds £	Total funds £
EXPENDITURE ON			
Raising funds	974	-	974
Charitable activities			
Support and advice	<u>1,274</u>	<u>168,106</u>	<u>169,380</u>
Total	<u>2,248</u>	<u>168,106</u>	<u>170,354</u>
NET INCOME/(EXPENDITURE)	17,668	(13,186)	4,482
RECONCILIATION OF FUNDS			
Total funds brought forward	<u>50,452</u>	<u>58,020</u>	<u>108,472</u>
TOTAL FUNDS CARRIED FORWARD	<u><u>68,120</u></u>	<u><u>44,834</u></u>	<u><u>112,954</u></u>

13. DEBTORS: AMOUNTS FALLING DUE WITHIN ONE YEAR

	31.3.17	31.3.16
	£	£
Other debtors	<u>55,174</u>	<u>2,858</u>

14. CREDITORS: AMOUNTS FALLING DUE WITHIN ONE YEAR

	31.3.17	31.3.16
	£	£
Trade creditors	2,953	2,477
Social security and other taxes	4,977	2,627
Accrued expenses	<u>3,662</u>	<u>1,160</u>
	<u><u>11,592</u></u>	<u><u>6,264</u></u>

Cambridge Rape Crisis Centre

**Notes to the Financial Statements
for the Year Ended 31 March 2017**

15. MOVEMENT IN FUNDS

	At 1.4.16 £	Net movement in funds £	Transfers between funds £	At 31.3.17 £
Unrestricted funds				
General fund	68,120	(9,586)	(1,073)	57,461
Restricted funds				
BBC Children in need	11,231	(3,674)	-	7,557
Cambridgeshire County Council: Counselling service	5,962	(5,517)	-	445
Cambridgeshire County Council: ISVA training	-	(1,073)	1,073	-
Cambridge RAG	1,209	(1,209)	-	-
Police & Crime Commissioner: Capacity Fund	8,198	(8,198)	-	-
Cambridgeshire County Council : DAT counselling	4,015	(4,015)	-	-
Victims of Sexual Abuse Support Fund	14,219	(14,219)	-	-
Cambridge City Council Area Committee Community Grant	-	2,680	-	2,680
PCC: Contract for ISVA	-	23,333	-	23,333
PCC Countywide YP ISVA service	-	31,309	-	31,309
Cambridgeshire County Council (DGLC)	-	4,800	-	4,800
	<u>44,834</u>	<u>24,217</u>	<u>1,073</u>	<u>70,124</u>
TOTAL FUNDS	<u><u>112,954</u></u>	<u><u>14,631</u></u>	<u><u>-</u></u>	<u><u>127,585</u></u>

Cambridge Rape Crisis Centre

**Notes to the Financial Statements
for the Year Ended 31 March 2017**

15. MOVEMENT IN FUNDS - continued

Net movement in funds, included in the above are as follows:

	Incoming resources £	Resources expended £	Movement in funds £
Unrestricted funds			
General fund	25,361	(34,947)	(9,586)
Restricted funds			
BBC Children in need	9,719	(13,393)	(3,674)
Cambridge City Council: Safer City Grant	2,940	(2,940)	-
Cambridgeshire County Council: ISVA training	500	(1,573)	(1,073)
Cambridgeshire County Council: ISVA Admin fund	6,720	(6,720)	-
Cambridge RAG	4,250	(5,459)	(1,209)
Ministry of Justice: Rape Support Fund	30,000	(30,000)	-
Ministry of Justice: Rape Support Fund Uplift	12,000	(12,000)	-
Police & Crime Commissioner: Capacity Fund	-	(8,198)	(8,198)
Police & Crime Commissioner: Victims Fund [1]	76,700	(76,700)	-
Victims of Sexual Abuse Support Fund	-	(14,219)	(14,219)
Cambridge City Council Community Safety Fund	5,000	(5,000)	-
Cambridge City Council Area Committee Community Grant	4,650	(1,970)	2,680
Huntingdonshire Community Safety Partnership	3,450	(3,450)	-
PCC: Contract for ISVA	23,333	-	23,333
PCC Countywide YP ISVA service	46,851	(15,542)	31,309
Cambridgeshire County Council (DGLC)	5,000	(200)	4,800
Cambridgeshire County Council: Counselling service	-	(5,517)	(5,517)
Cambridgeshire County Council : DAT counselling	-	(4,015)	(4,015)
	231,113	(206,896)	24,217
TOTAL FUNDS	256,474	(241,843)	14,631

Cambridge Rape Crisis Centre

Notes to the Financial Statements for the Year Ended 31 March 2017

MOVEMENT IN FUNDS - continued

15.

The General reserve represents the free funds of the charity which are not designated for particular purposes.

The restricted funds of the charity during the period were:

BBC Children in Need

Funding for the children and young peoples counselling service providing children and young people aged 5 - 18 years who are survivors of sexual abuse with access to specialist sexual violence counselling.

Cambridgeshire County Council

Counselling: Counselling service development in Huntingdon.

ISVA training: Conference costs for RCEW.

ISVA admin fund: Administrative costs associated with ISVA service.

ISVA management recharge fund: Management costs associated with ISVA service.

Young People: Services and associated costs for Young Persons Prevention Programme.

Drugs & Alcohol: Services and associated costs for DAT counselling.

Cambridge City Council

Community Safety Fund - Contribution to Helpline and phone costs.

Safer City Grant: Healing & Empowerment Group - Group Work programme for young people at risk - to be spent on workshop costs (consultant, room hire, and salary contribution for management).

Area Committee Community Grant: Funding to be spent on any costs associated with move to new premises.

Ministry of Justice

Rape Support Fund: Provides core funding for CRCC.

Cambridge RAG

Contribution to core costs to support core services.

Police & Crime Commissioner

Capacity Fund: Funds capacity development of counselling service.

Victim Support Fund [1]: Helpline expansion.

Victim Support Fund [2]: Peer support group work.

Contract for ISVA: Funding for adult ISVA post.

Countrywide YP ISVA service: Funding for young persons ISVA support.

Office Move Fund

Funding to be spent on any costs associated with move to new premises.

Huntingdonshire Community Safety Partnership

Group Work programme for young people at risk - to be spent on workshop costs (consultant, room hire, and salary contribution for management).

Safer City Grant: Healing & Empowerment Group

Group Work programme for young people at risk - to be spent on workshop costs (consultant, room hire, and salary contribution for management).

Cambridge Rape Crisis Centre

**Notes to the Financial Statements
for the Year Ended 31 March 2017**

15. MOVEMENT IN FUNDS - continued

Transfers between funds

A transfer of £1,073 was made from general reserves to the Cambridgeshire County Council ISVA training fund to cover additional expenses relating to the ISVA training.

16. RELATED PARTY DISCLOSURES

There were no related party transactions for the year ended 31 March 2017.

17. ULTIMATE CONTROLLING PARTY

The charity was controlled jointly by the trustees.

18. FIRST YEAR ADOPTION

This is the first year that the company has presented its financial statements under Financial Reporting Standard 102. The following disclosures are required in the year of transition. The last financial statements under previous UK GAAP were for the year ended 31 March 2016 and the date of transition to FRS 102 was therefore 1 April 2015.

No transition adjustments were required as a consequence of adopting FRS 102.

Cambridge Rape Crisis Centre
Detailed Statement of Financial Activities
for the Year Ended 31 March 2017

	31.3.17	31.3.16
	£	£
INCOME AND ENDOWMENTS		
Donations and legacies		
Donations	6,802	12,240
Other trading activities		
Fundraising events	18,330	5,189
Training income	<u>150</u>	<u>260</u>
	18,480	5,449
Investment income		
Deposit account interest	79	64
Charitable activities		
Grants	<u>231,113</u>	<u>157,083</u>
Total incoming resources	256,474	174,836
EXPENDITURE		
Raising donations and legacies		
Events	7,059	974
Charitable activities		
Wages	92,314	74,216
Social security	6,189	5,032
Pensions	4,146	-
Rent, rates and room hire	16,188	8,485
Insurance	514	480
Telephone and internet	5,711	2,927
Postage, stationery & office supplies	8,327	2,142
Sundries	1,100	174
Clinical Supervision	3,700	2,798
Volunteer training	1,315	2,415
Travel	2,120	220
DBS checks	-	30
Counselling	86,319	64,892
Payroll services	334	608
ISVA Expenses	5,133	4,063
Books and publications	<u>308</u>	<u>-</u>
	233,718	168,482
Support costs		
Governance costs		
Accountancy and legal fees	<u>1,066</u>	<u>898</u>
Total resources expended	241,843	170,354

Cambridge Rape Crisis Centre

**Detailed Statement of Financial Activities
for the Year Ended 31 March 2017**

	31.3.17 £	31.3.16 £
Net income	<u>14,631</u>	<u>4,482</u>

